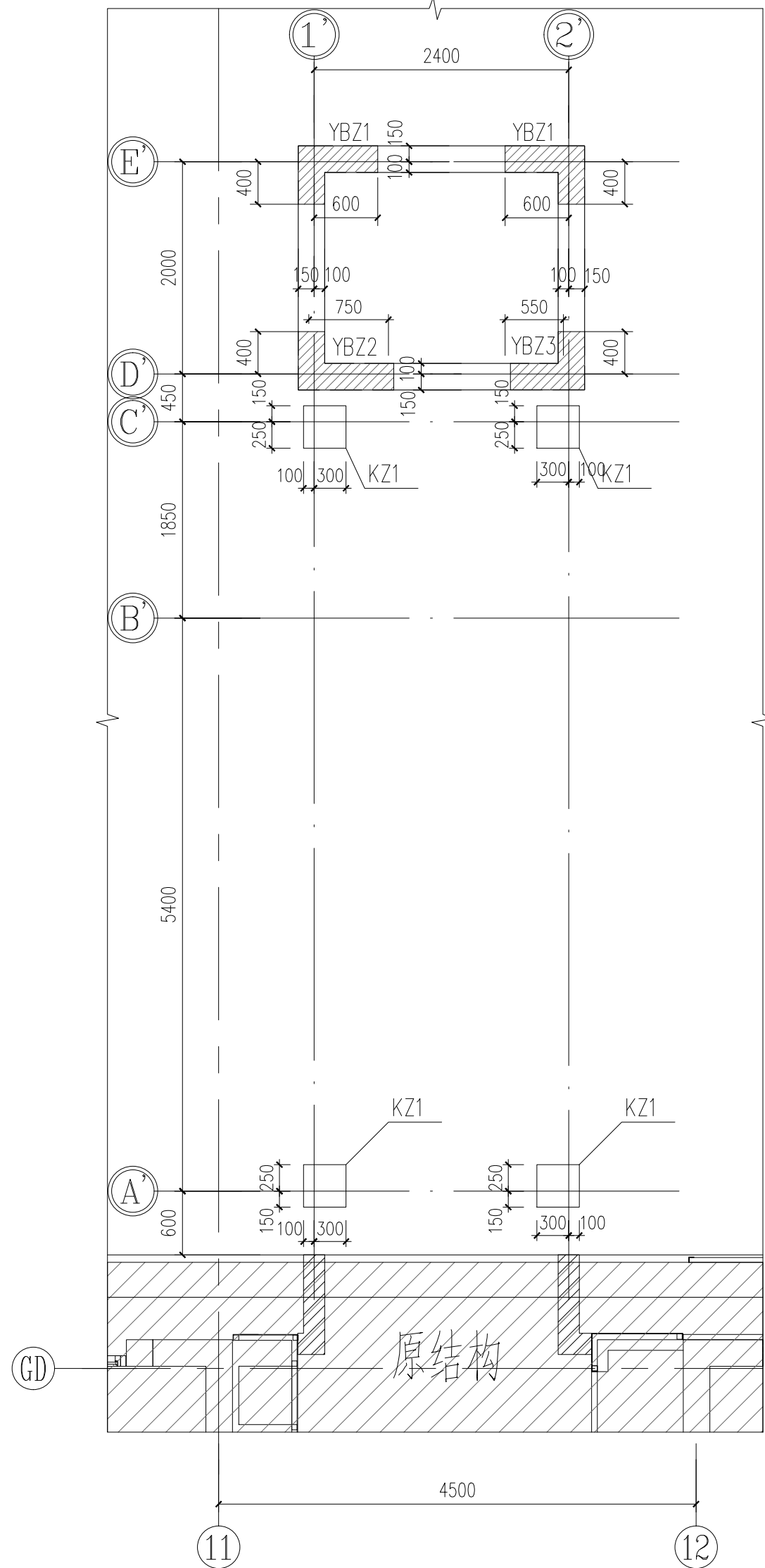


底部加强部位

屋顶	12.080		C30	
3	7.480	4.600	C30	C30
2	4.070	3.410	C30	C30
1	-0.380	4.450	C30	C30
基础顶	-1.650	1.270	C35	C35
层号	标高H(m)	层高(m)	墙柱砼	梁板砼

结构层楼面标高 结构层高

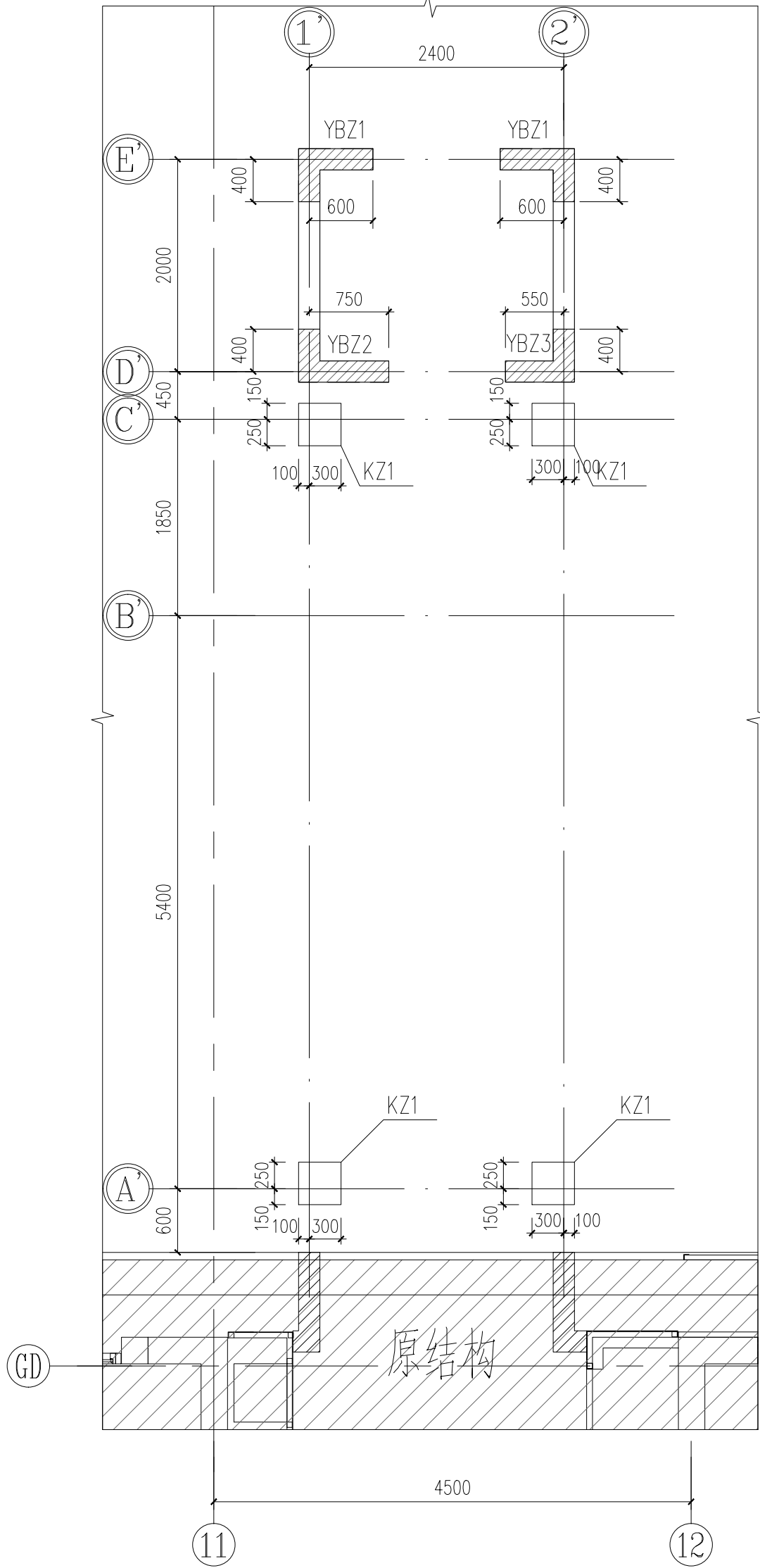
上部结构嵌固部位：基础顶



-1.650~-0.380m 墙柱平法施工图

说明：

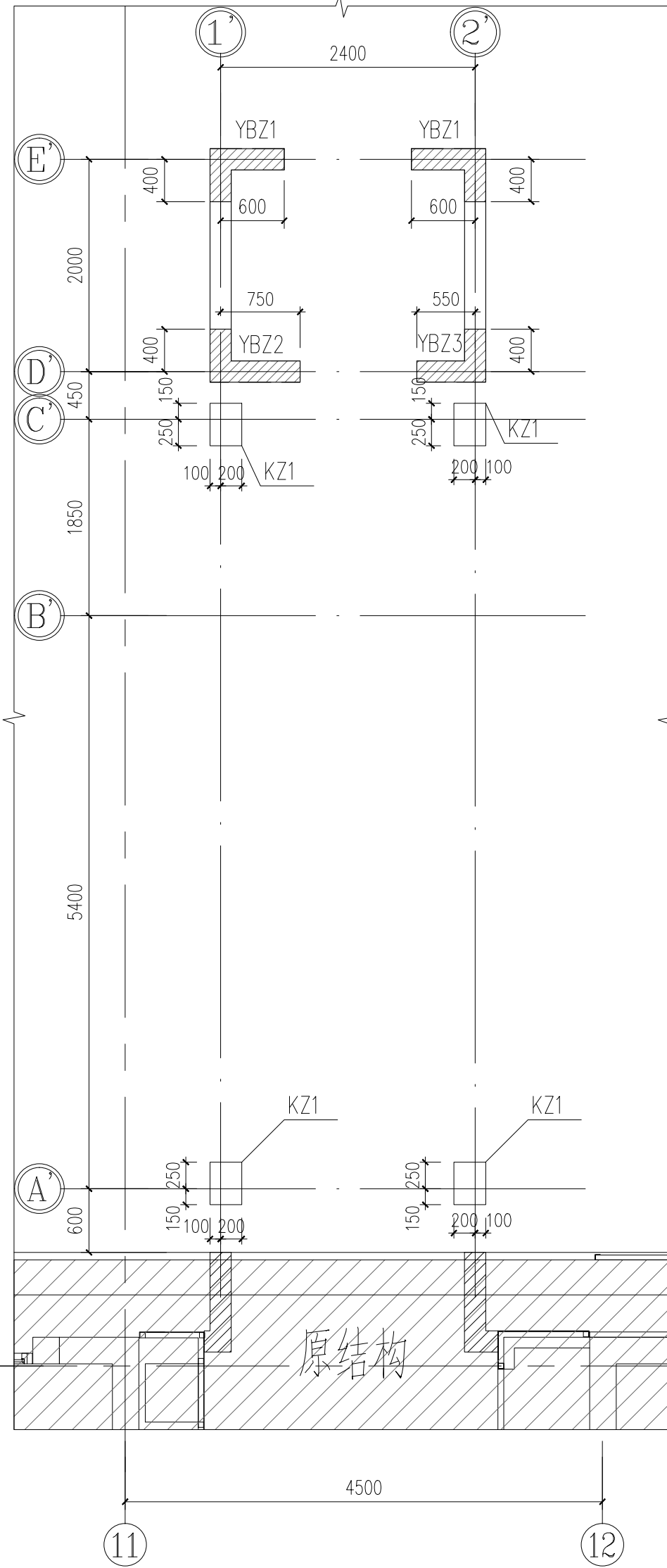
- 未定位尺寸的剪力墙、柱及边缘构件均轴线居中。
- 未注明剪力墙均为Q1。
- 除注明外，剪力墙预留孔洞及预埋套管详见各专业施工图。
- 剪力墙水平分布筋做法详见<<22G101-1>>第71、72、82页。
- 边缘构件竖向钢筋除Φ10、Φ12的钢筋应采用电渣压力焊，保证Φ12以上直径钢筋的焊接质量，Φ10、Φ12钢筋采用搭接接长，搭接区不再附加箍筋。
- 本层抗震等级三级。



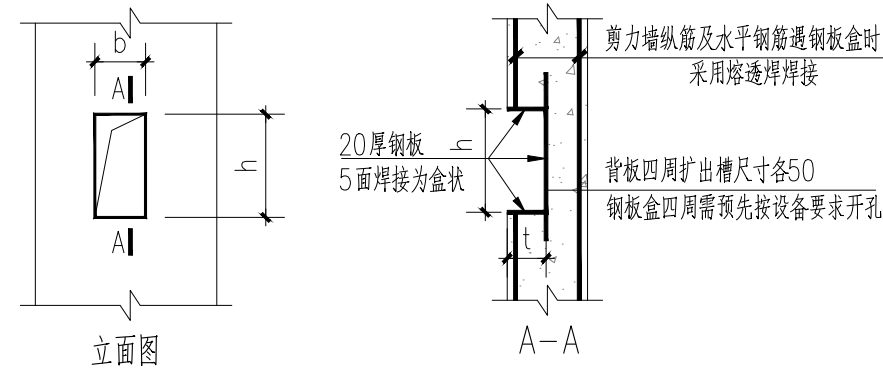
-0.080~4.070m墙柱平法施工图

剪力墙身表

编号	标高(m)	墙厚	排数	水平分布筋	垂直分布筋	拉筋(双向)
Q1	-1.650~-0.380	250	双排	Φ12@150	Φ12@150	Φ6@450@450
Q1	-0.380~12.080	200	双排	Φ8@150	Φ8@150	Φ6@450@450



4.070~屋顶墙柱平法施工图



剪力墙扭槽构造

图中尺寸b、h、t按接线盒、电梯召唤盒等设备尺寸定

KEY PLAN

版权所有 侵权必究
未经许可 不得转载
未经许可 不得转载

SHANGHAI HANLIAN ARCHITECTURAL DESIGN CONSULTATION CO., LTD.

SHANGHAI HANLIAN ARCHITECTURAL DESIGN CONSULTATION CO., LTD.

SHANGHAI HANLIAN ARCHITECTURAL DESIGN CONSULTATION CO., LTD.

SHANGHAI HANLIAN ARCHITECTURAL DESIGN CONSULTATION CO., LTD.

SHANGHAI HANLIAN ARCHITECTURAL DESIGN CONSULTATION CO., LTD.

SHANGHAI HANLIAN ARCHITECTURAL DESIGN CONSULTATION CO., LTD.

SHANGHAI HANLIAN ARCHITECTURAL DESIGN CONSULTATION CO., LTD.

SHANGHAI HANLIAN ARCHITECTURAL DESIGN CONSULTATION CO., LTD.

SHANGHAI HANLIAN ARCHITECTURAL DESIGN CONSULTATION CO., LTD.

SHANGHAI HANLIAN ARCHITECTURAL DESIGN CONSULTATION CO., LTD.

SHANGHAI HANLIAN ARCHITECTURAL DESIGN CONSULTATION CO., LTD.

SHANGHAI HANLIAN ARCHITECTURAL DESIGN CONSULTATION CO., LTD.

SHANGHAI HANLIAN ARCHITECTURAL DESIGN CONSULTATION CO., LTD.

SHANGHAI HANLIAN ARCHITECTURAL DESIGN CONSULTATION CO., LTD.

SHANGHAI HANLIAN ARCHITECTURAL DESIGN CONSULTATION CO., LTD.

SHANGHAI HANLIAN ARCHITECTURAL DESIGN CONSULTATION CO., LTD.

SHANGHAI HANLIAN ARCHITECTURAL DESIGN CONSULTATION CO., LTD.

SHANGHAI HANLIAN ARCHITECTURAL DESIGN CONSULTATION CO., LTD.

SHANGHAI HANLIAN ARCHITECTURAL DESIGN CONSULTATION CO., LTD.

SHANGHAI HANLIAN ARCHITECTURAL DESIGN CONSULTATION CO., LTD.

SHANGHAI HANLIAN ARCHITECTURAL DESIGN CONSULTATION CO., LTD.

SHANGHAI HANLIAN ARCHITECTURAL DESIGN CONSULTATION CO., LTD.

SHANGHAI HANLIAN ARCHITECTURAL DESIGN CONSULTATION CO., LTD.

SHANGHAI HANLIAN ARCHITECTURAL DESIGN CONSULTATION CO., LTD.

SHANGHAI HANLIAN ARCHITECTURAL DESIGN CONSULTATION CO., LTD.

SHANGHAI HANLIAN ARCHITECTURAL DESIGN CONSULTATION CO., LTD.

SHANGHAI HANLIAN ARCHITECTURAL DESIGN CONSULTATION CO., LTD.

SHANGHAI HANLIAN ARCHITECTURAL DESIGN CONSULTATION CO., LTD.

SHANGHAI HANLIAN ARCHITECTURAL DESIGN CONSULTATION CO., LTD.

SHANGHAI HANLIAN ARCHITECTURAL DESIGN CONSULTATION CO., LTD.

SHANGHAI HANLIAN ARCHITECTURAL DESIGN CONSULTATION CO., LTD.

SHANGHAI HANLIAN ARCHITECTURAL DESIGN CONSULTATION CO., LTD.

SHANGHAI HANLIAN ARCHITECTURAL DESIGN CONSULTATION CO., LTD.

SHANGHAI HANLIAN ARCHITECTURAL DESIGN CONSULTATION CO., LTD.

SHANGHAI HANLIAN ARCHITECTURAL DESIGN CONSULTATION CO., LTD.

SHANGHAI HANLIAN ARCHITECTURAL DESIGN CONSULTATION CO., LTD.

SHANGHAI HANLIAN ARCHITECTURAL DESIGN CONSULTATION CO., LTD.

SHANGHAI HANLIAN ARCHITECTURAL DESIGN CONSULTATION CO., LTD.

SHANGHAI HANLIAN ARCHITECTURAL DESIGN CONSULTATION CO., LTD.

SHANGHAI HANLIAN ARCHITECTURAL DESIGN CONSULTATION CO., LTD.

SHANGHAI HANLIAN ARCHITECTURAL DESIGN CONSULTATION CO., LTD.

SHANGHAI HANLIAN ARCHITECTURAL DESIGN CONSULTATION CO., LTD.